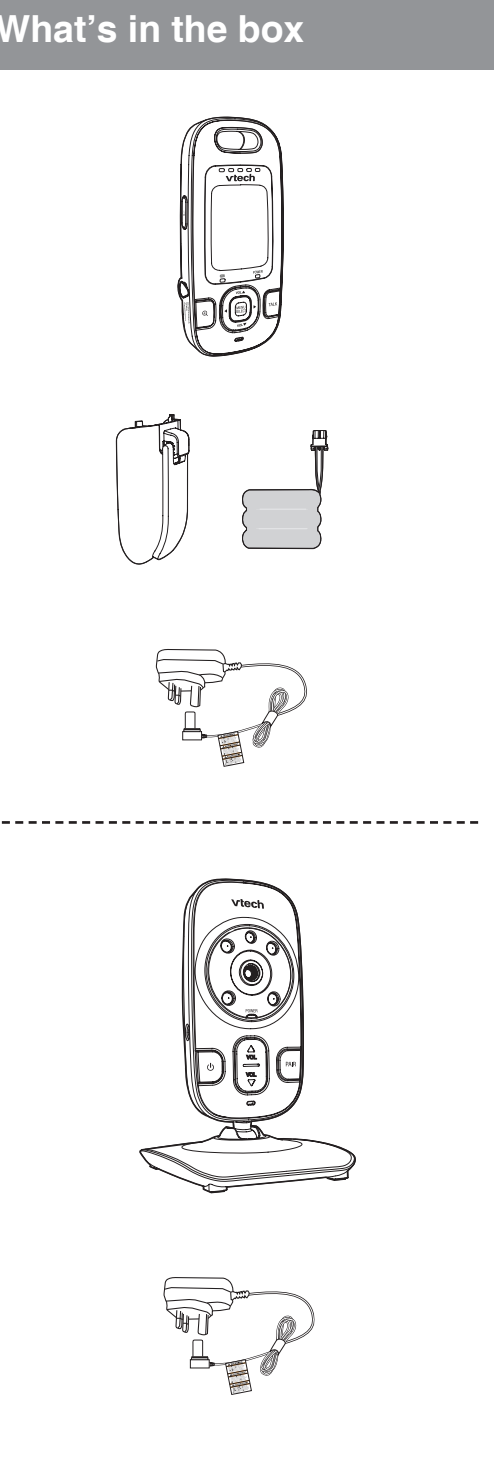
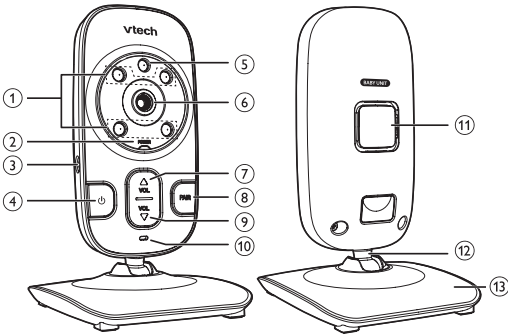


Safe & Sound™
Full Colour Video & Audio
Baby Monitor VM312



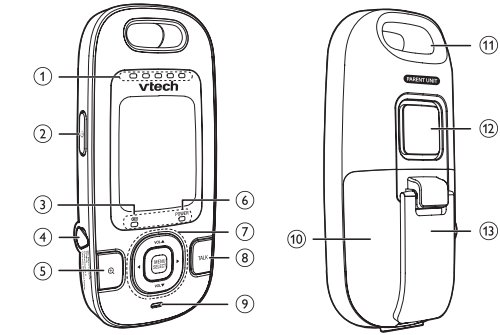
Overview

Baby unit overview



1	Infrared LEDs Backup light for night vision.
2	POWER on/off indicator <ul style="list-style-type: none">On when the baby unit is powered on and currently linked to parent unit.Flashes when the baby unit is not linked to a parent unit; or the pairing process is in progress.
3	Power jack
4	⏻ (On/Off) <ul style="list-style-type: none">Press to power on.Press and hold to power off.
5	Night sensor
6	Camera
7	▲/VOL Press to increase the listening volume.
8	PAIR Press and hold to pair to the parent unit.
9	▼/VOL Press to decrease the listening volume.
10	Microphone
11	Speaker
12	Ball joint stand Pan or tilt to adjust the camera angle.
13	Base

Parent unit overview



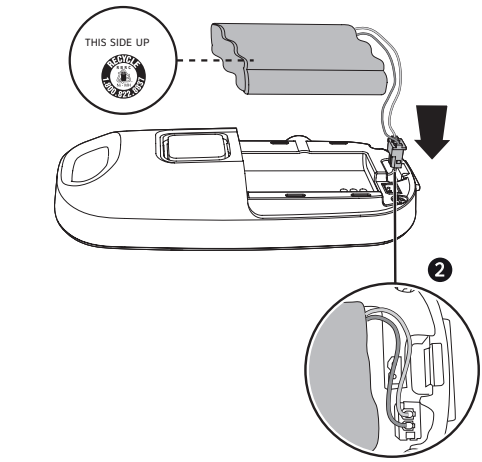
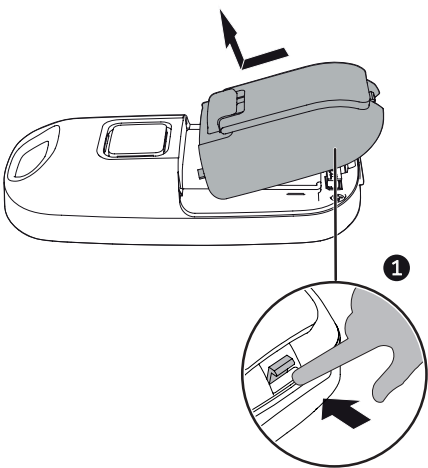
1	Visual sound indicator ○○○○○ The visual sound indicator has two functions. One is to show the sound level detected by the baby unit. The other one is to show the volume level during speaker volume setting. Sound level detected by the baby unit <ul style="list-style-type: none">●●●○○○ One to three green lights indicate a moderate sound level detected by the baby unit.●●●●●● Additional red lights indicate a higher sound level detected by the baby unit (e.g. baby crying loudly). Speaker volume level <ul style="list-style-type: none">●●●○○○ One to three green lights indicate Level 1 to Level 3 of the speaker volume setting.●●●●●● Additional red lights indicate Level 4 to Level 5 of the speaker volume setting.
2	⏻(On/Off) <ul style="list-style-type: none">Press to power on.Press and hold to power off.Press to turn on or off the screen.
3	🔋 Battery level indicator <ul style="list-style-type: none">Light on when the parent unit battery is being charged.Light flashes when the parent unit battery is low and needs charging.Light off when the parent unit battery is fully charged, or when no battery is installed.

Install the battery

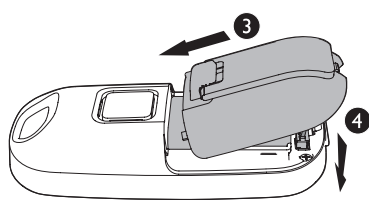
You can power up the parent unit by connecting it to AC power or to the rechargeable battery provided. Even if the parent unit is connected to AC power, we recommend you also install the battery. This guarantees continual operation in case of a power outage.

Install the battery as shown below.

1. Push the clip on the battery compartment cover and lift the cover to open.



3. Align the battery compartment cover against the battery compartment.
4. Push the battery compartment cover down and click into place.



Replace the battery

To replace the battery, pull the battery out of the battery compartment and unplug the battery connector from the socket, then follow the steps above to install the battery.

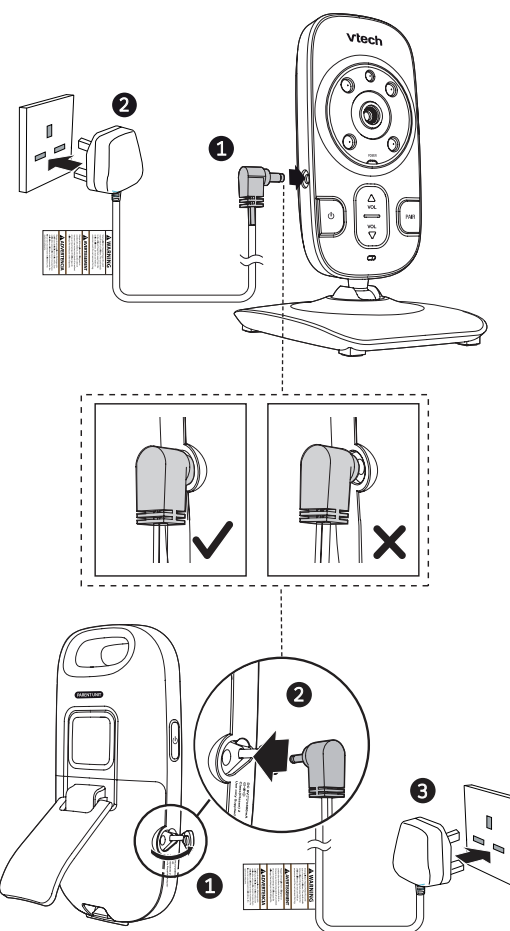
- NOTES
- The operating time for using the rechargeable battery is short. If you want to monitor your baby for a long time, we recommend you connect the parent unit to AC power.
 - If the parent unit will not be used for a long time, disconnect and remove the battery to prevent possible leakage.

9	Microphone
10	Battery compartment cover
11	Slot for portable use
12	Speaker
13	Stand

Connect and charge the battery

- NOTES
- Use only the battery supplied with this product.
 - Use only the parent unit power adaptor or the baby unit power adaptor supplied with this product.
 - Make sure the wall socket is switched on.
 - The parent unit power adaptor and baby unit power adaptor are intended to be correctly oriented in a vertical or floor mount position. The prongs are not designed to hold the plug in place if it is plugged into a ceiling, under-the-table or cabinet outlet.
 - Make sure the parent unit, the baby unit and the power adaptor cord are out of reach of children.

Connect the baby monitor



Parent unit display icons

	Connection status <ul style="list-style-type: none">Full displays when strong signal strength is detected between the baby unit and the parent unit.Three-quarters displays when moderate signal strength is detected between the baby unit and the parent unit.Half displays when the link between the baby unit and the parent unit is lost.Empty displays when the parent unit is searching for the baby unit.
	Current view status <ul style="list-style-type: none">Display the baby unit that is being viewed.
	Zoom <ul style="list-style-type: none">Display when the camera at the baby unit has zoomed in.
	Volume off <ul style="list-style-type: none">Display when the volume is turned off.
	Sound activation <ul style="list-style-type: none">Display when the sound activation is on.
	Battery status <ul style="list-style-type: none">Full battery icon animates when the battery is charging.Full battery icon displays solid when the battery is fully charged.Low battery icon displays when the battery is low and needs charging.Empty battery icon displays when no battery is installed but operates using AC power, or the battery has been installed incorrectly.

Charge the parent unit battery

Once you have connected the parent unit and installed its battery, press ⏻ to turn it on. The battery icon indicates the battery status (see the following table).

- NOTES
- The parent unit battery is fully charged after 12 hours of continuous charging.
 - It takes longer to charge the battery when the parent unit is turned on. To shorten the charging time, turn the parent unit off while charging.
 - The standby time varies depending on the sensitivity level you set, your actual use and the age of the battery.

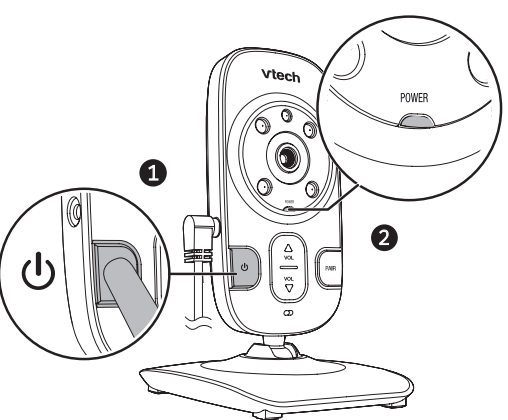
Battery indicators	Battery status	Action
The battery icon is off and no displays.	No battery is installed but operates using AC power, or the battery has been installed incorrectly.	Install the parent unit battery. Charge without interruption (at least 30 minutes).
The screen displays The light flashes.	The battery has very little charge and may be used for only a short time.	Charge without interruption (about 30 minutes).
The battery icon becomes solid.	The battery is fully charged.	To keep the battery charged, connect it to AC power when not in use.

Before use

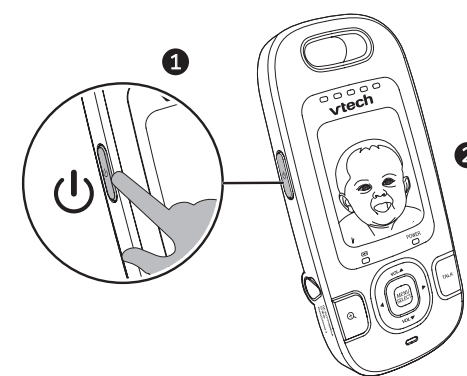
You may test the baby monitor before initial use, and at regular times thereafter.

To test your video and audio monitor:

1. Place the parent unit and the baby unit in the same room to test the product. Make sure the baby unit is at least 1 metre / 3 feet away from the parent unit.
2. Press ⏻ to turn on the baby unit. The **POWER** light turns on.



3. Press ⏻ to turn on the parent unit. The screen turns on.



NOTE

If both units are not connected, the parent unit displays while searching for a baby unit. If no baby unit is found after a while, it displays.

Positioning the baby monitor

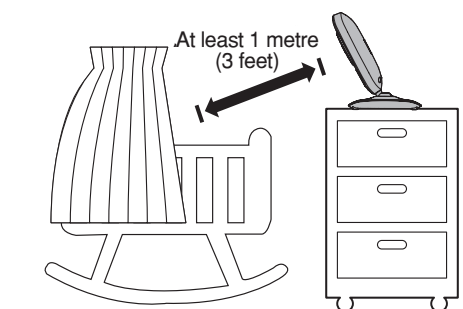
NOTE

This baby monitor is intended as an aid. It is not a substitute for proper adult supervision, and should not be used as such.

CAUTION

Keep the baby unit out of the reach of the baby. Never place or mount the baby unit inside the baby's cot or playpen.

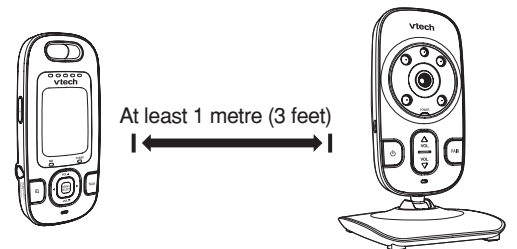
1. Place the baby unit at least 1 metre / 3 feet away from your baby.



NOTE

If you experience audio feedback on either the parent unit or baby unit, move the parent unit further away until there is no more audio feedback; or press **VOL** on the parent unit to lower the audio feedback sound.

2. Place the parent unit at least 1 metre / 3 feet away from the baby unit.



TIP

You can increase the speaker volume of the parent unit if you cannot hear the sounds transmitted from the baby unit.

Operating range

The operating range of the baby monitor is up to 300 metres (1,000 feet) outdoors or 50 metres (160 feet) indoors. The actual operating range may vary depending on the environmental conditions, and other interferences such as walls, doors, and other obstructions.

Using the baby monitor

Power on or off the baby unit

- Press ⏻ to power on the baby unit. The **POWER** light turns on.
- Press and hold ⏻ again to power off the baby unit. The **POWER** light turns off.

Power on or off the parent unit

- Press ⏻ to power on the parent unit. The screen turns on.
- Press and hold ⏻ again to power off the parent unit. The screen turns off.

Turn on or off the parent unit screen

You can turn on or off the parent unit screen without powering off the parent unit. You can still hear sound from the baby unit.

- Press ⏻ on the parent unit at any time.

Adjust the speaker volume for baby unit

You can adjust the speaker volume.

- Press ▲/VOL or ▼/VOL on the baby unit at any time.

Adjust the speaker volume for parent unit

You can adjust the speaker volume from High sensitivity, or turn it off. The preset speaker volume is Medium high sensitivity level.

- Press VOL▲ or VOL▼ on the parent unit while viewing image from baby unit.

When the speaker volume is set to off, the screen displays.

Adjust the LCD brightness of the parent unit

You can adjust the brightness of the parent unit screen. The LCD brightness is preset to Medium.

1. Press MENU/SELECT when the parent unit is not in use.
2. Press VOL▼ or VOL▲ to scroll to High sensitivity.
3. Press ◀ or ▶ to adjust the brightness.
4. Press MENU/SELECT to confirm your selection.

Adjust the sound sensitivity of the baby unit

You can choose to hear sounds from the baby unit all the time, or to hear sounds that exceed a certain level. You can use the parent unit to adjust the microphone sensitivity of your baby unit. The higher the sensitivity level, the more sensitive the baby unit is in detecting sounds for transmitting to the parent unit. The sound sensitivity is preset to Medium high sensitivity level.

Sound sensitivity table for reference

Icon display	Sensitivity	Description
	High sensitivity	High sensitivity level The parent unit speaker is constantly on, and you will hear all sounds (including background noises) from your baby's room.
		Medium high sensitivity level The parent unit speaker turns on for soft babbling and louder sounds from your baby. It remains quiet when your baby sleeps soundly.
		Medium sensitivity level The parent unit speaker turns on for loud babbling and louder sounds from your baby. It remains quiet when your baby makes soft sounds.
		Medium low sensitivity level The parent unit speaker turns on for crying and louder sounds from your baby. It remains quiet when your baby makes soft sounds.
	Low sensitivity	Low sensitivity level The parent unit speaker turns on for loud crying or screaming sounds from your baby. It remains quiet when your baby makes soft sounds.




1. Press MENU/SELECT when the parent unit is not in use.
2. Press VOL▼ or VOL▲ to scroll to Low sensitivity.
3. Press ◀ or ▶ to adjust the sensitivity level.
4. Press MENU/SELECT to confirm your selection.

TIP



You can adjust the baby unit placement to improve the sound detection.

Turn on or off the sound activation

The parent unit continuously monitors the sound level in your baby's room. When the sound activation mode is on, the parent unit screen turns on when the baby unit detects a sound. As long as no sound is detected within 50 seconds, the parent unit screen is off to save power. When your baby starts to cry, the sound activation triggers the parent unit screen automatically turns on.


- Press **MENU/SELECT** when the parent unit is not in use.
- Press **VOL▼** or **VOL▲** to scroll to .
- Press **◀** or **▶** to select  to turn on, or  to turn off sound activation.
- Press **MENU/SELECT** to confirm your selection.

NOTES

- If you mute the speaker while sound activation is on, then you hear a beep sound whenever the screen turns on.
- If you want to turn on the parent unit screen continuously while the sound activation is on, then set the sound sensitivity to  .



Select the camera

You can select the screen to view image from baby unit.

- Press **MENU/SELECT** when the parent unit is not in use.
- Press **VOL▼** or **VOL▲** to scroll to .
- Press **◀** or **▶** to select the baby unit.
- Press **MENU/SELECT** to confirm your selection.

Zoom

You can zoom in or out while viewing image from baby unit.

- Press  to zoom in.
- Press and hold **VOL▲**, **VOL▼**, **◀** or **▶** to move the zoomed image upward, downward, to the left or to the right correspondingly.
- Press  again to zoom out.

Talk function

You can use the **TALK** function of the parent unit to talk to and comfort your baby.

- Press and hold **TALK** when the parent unit is viewing the baby unit. Speak towards the microphone on the parent unit. Your voice is broadcast to the baby unit.

Night vision

The baby unit has infrared LEDs that allow you to see your baby clearly at night or in a dark room. When the baby unit detects low light levels, the infrared LEDs are switched on automatically.

NOTE

When the infrared LEDs are on, the image is in black and white. This is normal due to external light sources.

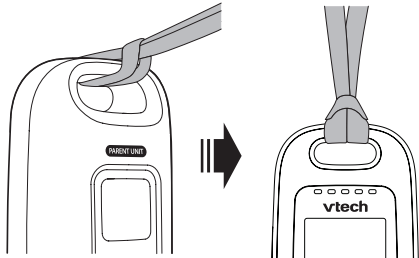
TIP

Depending on the surroundings and other interfering factors, like lightings, objects, colours and backgrounds, the display resolution may vary. Adjust the baby unit's angle or place the baby unit at a higher level to prevent glare and blurry display.

Portable use of parent unit (optional)

NOTE

Strap is not included. You may need to buy a strap for portable usage.



- Make sure battery is installed and charged. Unplug the power adaptor.
- Pinch the end of the strap and insert it into the slot on the top of the parent unit.
- Insert the one end of the strap into the other end of the strap, and fasten it.

General product care

To keep this product working well and looking good, follow these guidelines:


- Avoid putting it near heating appliances and devices that generate electrical noise (for example, motors or fluorescent lamps).
- DO NOT expose it to direct sunlight or moisture.
- Avoid dropping the product or treating it roughly.
- Clean with a soft cloth.
- DO NOT immerse the parent unit and the baby unit in water and do not clean them under the tap.
- DO NOT use cleaning spray or liquid cleaners.
- Make sure the baby unit and parent unit are dry before you connect them to the mains again.




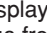
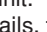
Storage

When you are not going to use the baby monitor for some time, remove the rechargeable battery from the parent unit. Store the parent unit, the baby unit and the adaptors in a cool and dry place.

Frequently asked questions

If you have difficulty with your baby monitor, please try the suggestions below.

Why does the baby monitor not respond normally?	Try the following (in the order listed) for common cure: 1. Disconnect the power to the baby unit and the parent unit. 2. Remove the batteries in the parent unit. Then, install the batteries again. 3. Wait a few minutes before connecting power back to the baby unit and the parent unit. 4. Turn on the baby unit and the parent unit. 5. Wait for the parent unit to synchronise with the baby unit. Allow up to one minute for this to take place.
Why don't the power-on light of the baby unit and parent unit go on when I switch on the units?	Perhaps the rechargeable battery of the parent unit is empty and the parent unit is not connected to the mains. Insert the appliance plug into the parent unit and put the adaptor in a wall socket. Then, press  to switch on the parent unit and to establish connection with the baby unit. Perhaps the baby unit is not connected to the mains. Connect the baby unit to the mains. Then, set ON/OFF switch to ON to switch on the baby unit and to establish connection with the parent unit.
Why is my screen in black and white?	The screen is black and white during nighttime or in a dark room. This is normal due to external light sources.
Why do I get glare or blurry display on my screen when viewing my baby at night?	During nighttime or in a dark room, the surroundings and other interfering factors, like lightings, objects, colours and backgrounds may affect the image quality on your parent unit screen. Adjust the baby unit's angle or place the baby unit at a higher level to prevent glare and blurry display.

Why does the baby monitor produce a high-pitched noise?	The units may be too close to each other. Make sure the parent unit and the baby unit at least 1 metre / 3 feet away from each other.
The POWER light on the baby unit flashes and the parent unit displays  .	The baby unit has unpaired from the parent unit. Pair the baby unit: 1. Press MENU/SELECT when the parent unit is not in use. 2. Press VOL▼ or VOL▲ to choose  . 3. Press VOL▼ or VOL▲ to choose a desired baby unit slot, then press MENU/SELECT. The screen displays . 4. Turn on the baby unit, and then immediately press and hold PAIR until the POWER light turns on. When pairing is successful, the screen displays , and then the image from the newly paired baby unit.<ul style="list-style-type: none">If pairing fails, the screen displays . Try the pairing process again.
Why does the parent unit react too quickly to other sounds?	The baby unit also detects other sounds than those of your baby. Adjust the sensitivity level to a lower level or adjust the speaker volume on the parent unit.
Why don't I hear a sound/ Why can't I hear my baby cry?	The volume of the parent unit may have set too low. Press VOL▲ to increase the volume level. You may have set a low sound sensitivity level. See Adjust the sound sensitivity of the baby unit to change the setting.

Important safety instructions

When using your equipment, basic safety precautions should always be followed to reduce the risk of fire, electric shock and injury, including the following:

- Follow all warnings and instructions marked on the product.
- Adult setup is required.
- This product is intended as an aid. It is not a substitute for responsible and proper adult supervision and should not be used as such.
- This product is not intended for use as a medical monitor.
- Do not use this product near water. For example, do not use it next to a bath tub, wash bowl, kitchen sink, laundry tub or swimming pool, or in a wet basement or shower.
- CAUTION:** Use only the batteries indicated in this manual. There may be a risk of explosion if a wrong type of battery is used for the parent unit. Use only the supplied rechargeable battery.
- Use only the adaptors included with this product. Incorrect adaptor polarity or voltage can seriously damage the product. Baby unit power adaptor: Input 100-240V AC 150mA 50/60Hz; Output: 6V DC 600mA Parent unit power adaptor: Input 100-240V AC 150mA 50/60Hz; Output: 6V DC 600mA.
- The power adaptors are intended to be correctly oriented in a vertical or floor mount position. The prongs are not designed to hold the plug in place if it is plugged into a ceiling, under-the-table or cabinet outlet.
- Unplug this product from the wall outlet before cleaning. Do not use liquid or aerosol cleaners. Use a damp cloth for cleaning.
- Unplug the power cords before replacing batteries.
- Do not cut off the power adaptors to replace them with other plugs, as this causes a hazardous situation.
- Do not allow anything to rest on the power cords. Do not install this product where the cords may be walked on or crimped.
- This product should be operated only from the type of power source indicated on the marking label. If you are not sure of the type of power supply in your home, consult your dealer or local power company.
- Do not overload wall outlets or use an extension cord.

- Do not place this product on an unstable table, shelf, stand or other unstable surfaces.
- This product should not be placed in any area where proper ventilation is not provided. Slots and openings in the back or bottom of this product are provided for ventilation. To protect them from overheating, these openings must not be blocked by placing the product on a soft surface such as a bed, sofa or rug. This product should never be placed near or over a radiator or heat register.
- Never push objects of any kind into this product through the slots because they may touch dangerous voltage points or create a short circuit. Never spill liquid of any kind on the product.
- To reduce the risk of electric shock, do not disassemble this product, but take it to an authorised service facility. Opening or removing parts of the product other than specified access doors may expose you to dangerous voltages or other risks. Incorrect reassembling can cause electric shock when the product is subsequently used.
- You should test the sound reception every time you turn on the units or move one of the components.
- Periodically examine all components for damage.
- Be aware of possible loss of privacy while using public airwaves. Conversations may be picked up by other nursery monitors, cordless phones, scanners, etc.
- Children should be supervised to ensure that they do not play with the product.
- The product is not intended for use by persons (including children) with reduced physical, sensory or mental capabilities, or lack of experience and knowledge, unless they have been given supervision or instruction concerning use of the appliance by a person responsible for their safety.

SAVE THESE INSTRUCTIONS

Cautions

- Use and store the product at a temperature between 0°C and 40°C.
- Do not expose the product to extreme cold, heat or direct sunlight. Do not put the product close to a heating source.
- Batteries should not be exposed to excessive heat such as bright sunshine or fire.
- Make sure the baby unit and the adaptor cord(s) are always out of reach of the baby, at least 3 feet away from the baby or cot, to avoid a possible strangulation hazard.
- Never place the baby unit inside the baby's cot or playpen. Never cover the baby unit or parent unit with anything such as a towel or a blanket.
- Other electronic products may cause interference with your baby monitor. Try installing your baby monitor as far away from these electronic devices as possible: wireless routers, radios, cellular telephones, intercoms, room monitors, televisions, personal computers, kitchen appliances and cordless telephones.

Customer service and product warranty

IMPORTANT

Please retain this booklet with your sales receipt as proof of the date of purchase.

Customer Service

Please call our Consumer Services Department on 01235 546810 (from UK) or +44 1235 546810 (outside UK) and a service representative will be happy to help you.



Technical specifications

Frequency control	Crystal controlled PLL synthesizer control
Transmit frequency	Baby unit: 2407.5 - 2475 MHz Parent unit: 2407.5 - 2475 MHz
Channels	21
LCD	2" Colour LCD (TFT 176x220 pixel)
Nominal effective range	Maximum power allowed by FCC and IC. Actual operating range may vary according to environmental conditions at the time of use.
Power requirement	Use only power adaptor listed below: Baby unit: Tenpao S003IB0600060 Input: 100-240V AC 150mA 50/60Hz Output: 6V DC 600mA Parent unit: Tenpao S003IB0600060 Input: 100-240V AC 150mA 50/60Hz Output: 6V DC 600mA
	For pluggable equipment, the socket-outlet (power adaptor) shall be installed near the equipment and shall be easily accessible
	Use only battery listed below: Parent Unit: Corun NI-MH-44AAA900*3-B 3 x 1.2V AAA size 900mAh NiMH GPI VTRHCH93N002 3 x 1.2V AAA size 900mAh NiMH

Disposal of batteries and product



The crossed-out wheeled bin symbols on products and batteries, or on their respective packaging, indicates they must not be disposed of in domestic waste as they contain substances that can be damaging to the environment and human health.



The chemical symbols Hg, Cd or Pb, where marked, indicate that the battery contains more than the specified value of mercury (Hg), cadmium (Cd) or lead (Pb) set out in Battery Directive (2006/66/EC).

The solid bar indicates that the product was placed on the market after 13th August, 2005.

Help protect the environment by disposing of your product or batteries responsibly.

For more information, please visit:

www.recycle-more.co.uk

www.recyclenow.com.



Designed to fit your home.
And your life.

VTech Telecommunications Ltd.
A member of THE VTECH GROUP OF COMPANIES.
Distributed in the U.K. by VTech Electronics Europe plc.,
VTech is the registered trademark of VTech Holdings Limited.
Specifications are subject to change without notice.
© 2015 for VTech Telecommunications Ltd.
All rights reserved. 03/15. VM312_UK_CIB_V1.0

