

vtech[®]

Safe & Sound Digital Audio Baby Monitor BM1000

User guide



Model: BM1000

Congratulations

On purchasing your new VTech product. Before using this product, please read **Important safety instructions** on the next page of this manual.

This manual has all the feature operations and troubleshooting necessary to install and operate your new VTech product. Please review this manual thoroughly to ensure proper installation and operation of this innovative and feature rich VTech product.

Important safety instructions

When using your equipment, basic safety precautions should always be followed to reduce the risk of fire, electric shock and injury, including the following:

1. Follow all warnings and instructions marked on the product.
2. Adult setup is required.
3. This product is intended as an aid. It is not a substitute for responsible and proper adult supervision and should not be used as such.
4. This product is not intended for use as a medical monitor.
5. Do not use this product near water. For example, do not use it next to a bath tub, wash bowl, kitchen sink, laundry tub or swimming pool, or in a wet basement or shower.
6. CAUTION: Use only the batteries indicated in this manual. There may be a risk of explosion if a wrong type of battery is used for the parent unit. Use only the supplied rechargeable battery.
7. Use only the adaptors included with this product. Incorrect adaptor polarity or voltage can seriously damage the product. Baby unit power adaptor: Input 100-240V AC 50/60 Hz; output: 6V DC 450 mA; Parent unit power adaptor: Input 100-240V AC 50/60 Hz; output: 6V DC 450 mA.
8. The power adaptors are intended to be correctly oriented in a vertical or floor mount position. The prongs are not designed to hold the plug in place if it is plugged into a ceiling, under-the-table or cabinet outlet.
9. Unplug this product from the wall outlet before cleaning. Do not use liquid or aerosol cleaners. Use a damp cloth for cleaning.
10. Unplug the power cords before replacing batteries.
11. Do not cut off the power adaptors to replace them with other plugs, as this causes a hazardous situation.
12. Do not allow anything to rest on the power cords. Do not install this product where the cords may be walked on or crimped.
13. This product should be operated only from the type of power source indicated on the marking label. If you are not sure of the type of power supply in your home, consult your dealer or local power company.
14. Do not overload wall outlets or use an extension cord.
15. Do not place this product on an unstable table, shelf, stand or other unstable surfaces.

Important safety instructions

16. This product should not be placed in any area where proper ventilation is not provided. Slots and openings in the back or bottom of this product are provided for ventilation. To protect them from overheating, these openings must not be blocked by placing the product on a soft surface such as a bed, sofa or rug. This product should never be placed near or over a radiator or heat register.
17. Never push objects of any kind into this product through the slots because they may touch dangerous voltage points or create a short circuit. Never spill liquid of any kind on the product.
18. To reduce the risk of electric shock, do not disassemble this product, but take it to an authorised service facility. Opening or removing parts of the product other than specified access doors may expose you to dangerous voltages or other risks. Incorrect reassembling can cause electric shock when the product is subsequently used.
19. You should test the sound reception every time you turn on the units or move one of the components.
20. Periodically examine all components for damage.
21. Be aware of possible loss of privacy while using public airwaves. Conversations may be picked up by other nursery monitors, cordless phones, scanners, etc.
22. Children should be supervised to ensure that they do not play with the product.
23. The product is not intended for use by persons (including children) with reduced physical, sensory or mental capabilities, or lack of experience and knowledge, unless they have been given supervision or instruction concerning use of the appliance by a person responsible for their safety.

SAVE THESE INSTRUCTIONS

Important safety instructions

Cautions

1. Use and store the product at a temperature between 10°C and 39°C.
2. Do not expose the product to extreme cold, heat or direct sunlight. Do not put the product close to a heating source.
3. Batteries should not be exposed to excessive heat such as bright sunshine or fire.
4. Make sure the baby unit and the adaptor cord are always out of reach of the baby, at least 1 metre away from the baby or cot, to avoid a possible strangulation hazard.
5. Never place the baby unit inside the baby's cot or playpen.
6. Never cover the baby unit or parent unit with anything such as a towel or a blanket.
7. Other electronic products may cause interference with your audio monitor. Try installing your audio monitor as far away from these electronic devices as possible: wireless routers, radios, cellular telephones, intercoms, room monitors, televisions, personal computers, kitchen appliances and cordless telephones.

Table of contents

Getting started	1
Parts checklist.....	1
Baby unit installation	2
Parent unit installation.....	3
Baby unit overview	4
Parent unit overview	5
Parents unit lights.....	6
Positioning and operating range	7
Position the audio monitor.....	7
Test your audio monitor before use.....	7
Using your baby monitor	8
Power the baby unit on or off	8
Power the parent unit on or off.....	8
Adjust speaker volume.....	8
Appendix	9
Troubleshooting	9
Customer service & Product warranty	12
Technical specifications	14
Disposal of batteries and product	15

Getting started

Parts checklist

Check to make sure the package contains the following items. Save your sales receipt and original packaging in the event warranty service is necessary.



Parent unit
(BM1000 PU)



Parent unit
battery
compartment
cover



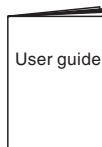
2 batteries for
parent unit



Baby unit
(BM1000 BU)



2 power
adaptors



User guide

note

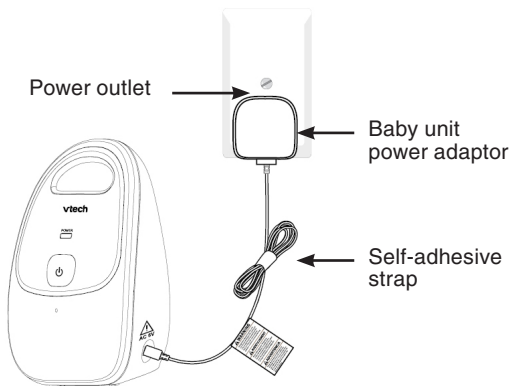
To purchase replacement batteries or power adaptors please call our Consumer Services Department on 01235 546810 (from UK) or +44 1235 546810 (outside UK).

Getting Started

Baby unit installation

Install the baby unit as shown below.

Make sure the wall socket is switched on.

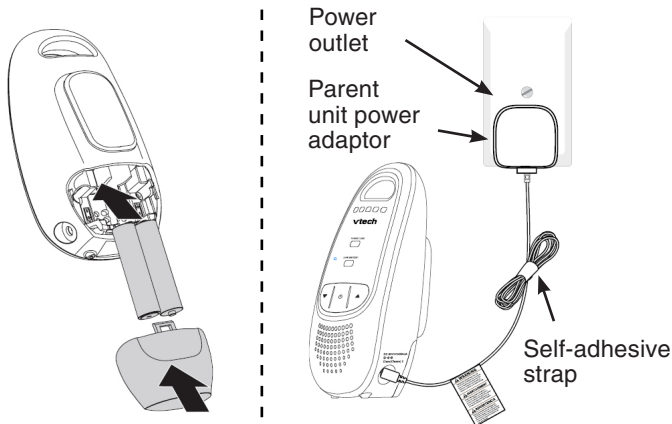


1. Choose either power adaptor that comes with the package. Insert the DC plug of the power adaptor into the DC socket on the side of the baby unit.
2. Connect the other end of the power adaptor to a suitable mains power socket.

Getting Started

Parent unit installation

The package comes with two rechargeable batteries. You can power up the parent unit by using the two rechargeable batteries or by connecting it to the mains power. However, even if the parent unit is connected to the mains power, we recommend you to also install the rechargeable batteries. This guarantees the continual operation in case of a power outage.

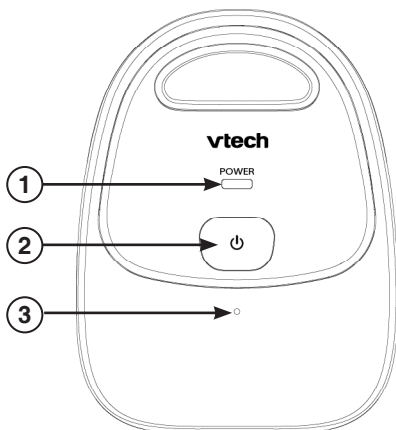


To set up the parent unit:

1. Remove the battery compartment cover.
2. Install the supplied rechargeable batteries into the battery compartment, matching the polarity markings (+ and -).
3. Replace the battery compartment cover.
4. Insert the DC plug of the other power adaptor into the DC socket on the side of the parent unit.
5. Connect the other end of the power adaptor to a suitable mains power socket.
6. The Charging LED lights up indicating the parent unit is charging.

Getting started

Baby unit overview



1 – Power indicator

On when the baby unit is switched on.

Off when the baby unit is switched off.

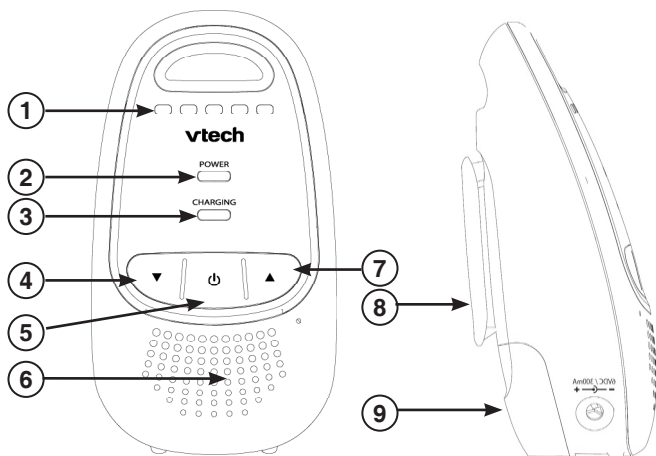
2 – (On/off)

Press and hold to turn on/off the baby unit.

3 – Microphone

Getting started

Parent unit overview



1 – Sensitivity LEDs

2 – Power Indicator Light

3 – Low Battery / Charging Indicator Light

4 – ▼ (Volume down)

Press to decrease the speaker volume.

5 – ⏻ (On/off)

Press and hold to turn on or off.

6 – Speakerphone

7 – ▲ (Volume up)

Press to increase the speaker volume.


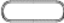

8 – Belt Clip

9 – Battery Compartment Cover

Getting started

Parent unit overview (continued)

Parents unit lights

	<p>3 green lights and 2 red lights indicating the sound level detected by the baby unit.</p> <p>Green lights indicate a moderate level of sound is detected.</p> <p>Red lights indicate a higher level of sound is detected.</p> <p>More lights turn on when the sound level detected increases.</p>
<p>POWER</p> 	<p>Off when the parent unit is off.</p> <p>On in green steadily when the parent unit is on and is linked to the baby unit.</p> <p>Flashes in green when there is no link between the baby unit and parent unit.</p>
<p>CHARGING</p> 	<p>On in red steadily when the parent unit is charging.</p> <p>Flashes in red when the battery is low.</p>

Getting Started

Positioning and operating range

Position the audio monitor

Place the parent unit within the operating range of the baby unit. We recommend the parent unit is at least 1.5 metres away from the baby unit to avoid audio feedback. If you still experience audio feedback, move the parent unit and the baby unit farther apart.



note

- If the signal is poor, try moving the parent and/or the baby unit to different positions in the rooms.
- It is the caregiver's responsibility to stay close enough to take care of any eventuality.

Test your audio monitor before use

It is important to test the audio monitor when it is installed initially, and at regular times thereafter. Test your parent unit and baby unit if they have not been used for a long time or you suspect they are defective.

To test your audio monitor:



1. Place the parent unit and the baby unit in the same room to test the product. Make sure the baby unit is at least 1.5 metres away from the parent unit.
2. Press and hold  on the baby unit until the Power indicator light turns on.
3. Press and hold  on the parent unit until the Power indicator turns on steadily. The parent unit plays sound detected from the baby unit. Your audio monitor is now ready for use.

note



If no connection can be established, the Power indicator light on the parent unit flashes in green.

Using your baby monitor

Power the baby unit on or off


- Press and hold  for 2 seconds to turn on the baby unit. The Power indicator light turns on.
- Press and hold  for 2 seconds again to turn off the baby unit. The Power indicator light turns off.

Power the parent unit on or off

- Press and hold  for 2 seconds to turn on the parent unit. The Power indicator light turns on.
- Press and hold  for 2 seconds again to turn off the parent unit. The Power indicator light turns off.

Adjust speaker volume

There are five volume levels (**Level 1 to Level 5**) plus **volume off** on parent unit. When adjusting speaker volume, the sensitivity indicator LED(s) light(s) up briefly to indicate the current volume level. To adjust the speaker volume:

Press  to increase and  to decrease the volume of the parent unit.

note

You will hear two beeps when the volume level has reached the minimum or maximum level.

Appendix

Troubleshooting

If you have difficulty with your audio monitor, please try the suggestions below.

My audio monitor does not work at all.

- Make sure the baby unit, parent unit and the batteries are installed and charged correctly. For optimum daily performance, charge the parent unit when it is not in use.
- Make sure the power adaptors are securely plugged into the outlet not controlled by a wall switch.
- Make sure the adaptor cords are plugged firmly into the baby unit and parent unit.
- Make sure the baby unit and the parent unit are turned on.
- The parent unit may be too far away from the baby unit. Move the parent unit closer to the baby unit (but not less than 1.5 metres).
- Unplug the electrical power to the baby unit and parent unit. Wait for approximately 15 seconds, then plug it back in. Turn on the baby unit and the parent unit. Allow up to one minute for the baby unit and the parent unit to synchronise.
- Charge the batteries in the parent unit for up to 12 hours.
- If the parent unit batteries are completely depleted, they may take up to 30 minutes to charge the parent unit before it can be used for a short time.
- Remove the batteries and then install them again. If that still does not work, it may be necessary to purchase new batteries.
- Large obstructions may impact the reception. Try to relocate the baby unit, away from large obstructions such as walls and doors.
- Other electronic products may cause interference with your audio monitor. Try installing your audio monitor as far away from these electronic devices as possible: wireless routers, radios, cellular telephones, intercoms, room monitors, televisions, personal computers, kitchen appliances and cordless telephones.

The audio monitor produces high-pitched noise.

- The parent unit may be too close to the baby unit. Make sure the parent unit and the baby unit are at least 1.5 metres away from one another.

Appendix

Troubleshooting (continued)

The parent unit plays any sounds from the baby unit and I think it is too noisy.

- You may need to adjust the speaker volume on the parent unit.

The parent unit does not play any sound when there is noise from the baby unit.

- Make sure the parent unit is powered up by connecting it to mains power or to the rechargeable batteries provided.
- Make sure the parent unit is turned on and the speaker volume is not set to off.
- The parent unit may be too far away from the baby unit. Move the parent unit closer to the baby unit (but not less than 1.5 metres).
- If the parent unit is powered by the provided batteries, make sure there is sufficient charge. Charge the battery in the parent unit for up to 12 hours.
- Large obstructions may impact the reception. Try to relocate the baby unit, away from large obstructions such as walls and doors.
- Remove the batteries and then install it again. Turn on the baby unit and the parent unit. Allow up to one minute for the parent unit and the baby unit to synchronise.
- Other electronic products may cause interference with your audio monitor. Try installing your audio monitor as far away from these electronic devices as possible: wireless routers, radios, cellular telephones, intercoms, room monitors, televisions, personal computers, kitchen appliances and cordless telephones.

Battery low at the Parent Unit.

- Charge the battery in the parent unit for up to 12 hours.
- The volume level of the parent unit may be set too high which consumes power. Decrease the volume level of the parent unit. Refer to **Adjust speaker volume** (p.8) for volume level settings.
- Remove the battery and then install it again. Use it until fully depleted, then recharge it in the parent unit for up to 12 hours.
- If the above measures do not correct the problem, replace the battery.


Appendix

Troubleshooting (continued)

The battery does not charge in the parent unit or the parent unit battery does not accept charge.

- Make sure the batteries are installed in the parent unit battery compartment correctly. The Charging indicator light on the parent unit should be on when charging.
- Remove the battery and then install it again, then charge for up to 12 hours.
- If the battery is completely depleted, it may take up to 30 minutes to charge the parent unit before it can be used for a short time.
- Purchase new batteries. Refer to Parent unit battery installation and Parent unit battery charging.

The parent unit beeps.

- Move the parent unit closer to the baby unit (but not less than 1.5 metres). The parent unit may be out of range.
- The batteries may be running low, connect the parent unit to the mains power with the supplied power adaptor for recharging.
- The baby unit may be switched off. Press and hold  key to switch on the baby unit.

Common cure for electronic equipment.

- If the audio monitor is not responding normally, try the following (in the order listed):
 1. Disconnect the power to the baby unit and the parent unit.
 2. Remove the batteries in the parent unit and then install the batteries again.
 3. Wait a few minutes before connecting power back to the baby unit and the parent unit.
 4. Turn on the baby unit and the parent unit.
 5. Wait for the parent unit to synchronise with the baby unit. Allow up to one minute for this to take place.

Appendix

Customer service & Product warranty

IMPORTANT

Please retain this booklet with your sales receipt as proof of the date of purchase.

Customer Service

Please call our Consumer Services Department on 01235 546810 (from UK) or +44 1235 546810 (outside UK) and a service representative will be happy to help you.

Appendix

Customer service & Product warranty .



PRODUCT WARRANTY



Thank you for choosing this quality product from VTech. We hope it will bring many hours of entertainment, imaginative play and learning.

1. The product detailed above is covered by a one year warranty from the date of purchase, against any defects in materials or workmanship.
2. The product may be returned to the place of purchase. Alternatively the product can be returned to VTech Electronics Europe plc (see address below), with proof of purchase, without proof of purchase no replacement will be provided.
3. VTech Electronics Europe plc will examine the product and if it is found to be defective due to faulty materials or workmanship, will replace the product at their discretion.
4. If the product covered by this warranty is damaged due to misuse, modification or unauthorised repair, or because of faulty batteries, battery discharge or incorrect electrical connections, then this warranty becomes void.
5. This warranty is personal to the original purchaser and is not transferable.
6. Breakages to the LCD screen are not covered by the warranty.
7. Returns to VTech Electronics Europe plc should include a cheque or postal order for £1.50 towards the cost of return postage and packaging.
8. Products returned to VTech Electronics Europe plc, should be addressed as follows and packed carefully to avoid damage in transit (Please do not include batteries or adaptor).
Please include details of the fault together with your name and address.

VTech Electronics Europe plc, c/o Tablogix Limited, 200 Milton Park, Abingdon, Oxon OX14 4TA

THIS WARRANTY IS OFFERED AS AN EXTRA BENEFIT AND DOES NOT AFFECT CONSUMERS' STATUTORY RIGHTS.

This warranty is valid for the UK and Eire only. For products purchased outside the UK and Eire, please contact your local distributor or place of purchase.

Appendix

Technical specifications

No. Of channels:	120
Frequency:	1881.792 - 1897.344 MHz
Power supply	<p>Use only adaptor listed below: Electrical power: Baby unit: Ten Pao - S004LB0600045 Input: 100 - 240VAC 50/60Hz 150mA Output: 6VDC 450mA Parent unit: Ten Pao - S004LB0600045 Input: 100 - 240VAC 50/60Hz 150mA Output 6VDC 450mA</p> <p>Use only battery listed below: Battery Information: Parent unit: GPI - VTHC043C00, 2 x 1.2V AAA size 400mAh NiMH CORUN - Ni-MHAAAJ400, 2 x 1.2V AAA size 400mAh NiMH</p>
Transmitting power:	Max.250mW
Operating temperature:	10°C to 39°C

Appendix

Disposal of batteries and product



The crossed-out wheellie bin symbols on products and batteries, or on their respective packaging, indicates they must not be disposed of in domestic waste as they contain substances that can be damaging to the environment and human health.



The chemical symbols Hg, Cd or Pb, where marked, indicate that the battery contains more than the specified value of mercury (Hg), cadmium (Cd) or lead (Pb) set out in Battery Directive (2006/66/EC).

The solid bar indicates that the product was placed on the market after 13th August, 2005.



Help protect the environment by disposing of your product or batteries responsibly.

For more information, please visit:

www.recycle-more.co.uk

www.recyclenow.com



Designed to fit your home.
And your life.



VTech Telecommunications Ltd.

A member of THE VTECH GROUP OF COMPANIES.

Distributed in the U. K. By VTech Electronics Europe plc.,

VTech is the registered trademark of VTech Holdings Limited.

Specifications are subject to change without notice.

© 2015 for VTech Telecommunications Ltd.

All rights reserved.03/15. BM1000_UK_CIB_V1.0

vtech®