

**vtech**<sup>®</sup>  
Baby

Parent's Guide

# My 1st Lion Rattle



91-003335-00x (UK)

VTech understands that a child's needs and abilities change as they grow and with that in mind we develop our toys to teach and entertain at just the right level...

## Electronic Learning Computers

Cool, aspirational and inspiring computers for curriculum related learning

### vtech *Baby*

Toys that will stimulate their interest in different textures, sounds and colours

#### I am...

...responding to colours, sounds and textures

...understanding cause and effect

...learning to touch, reach, grasp, sit-up, crawl and toddle

Birth-36 months



### Pre-School

Interactive toys to develop their imagination and encourage language development

#### I want...

...to get ready for school by starting to learn the alphabet and counting

...my learning to be as fun, easy and exciting as can be

...to show my creativity with drawing and music so my whole brain develops

3-6 years



4-10 years



#### I need...

...challenging activities that can keep pace with my growing mind

...intelligent technology that adapts to my level of learning

...National Curriculum based content to support what I'm learning at school

To learn more about this and other VTech® products, visit [www.vtech.co.uk](http://www.vtech.co.uk)

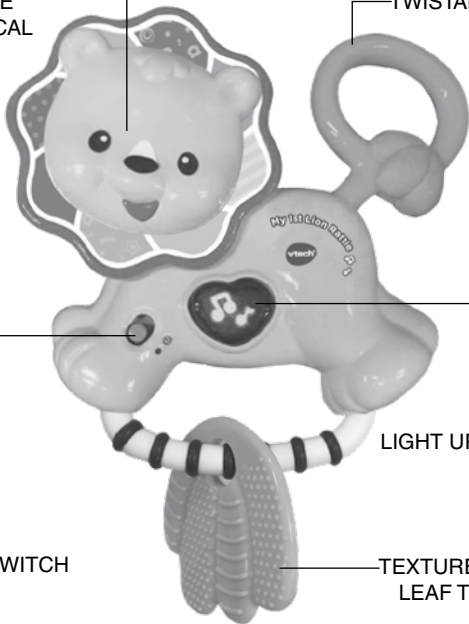
# INTRODUCTION

Thank you for purchasing the **VTech® My 1st Lion Rattle!**

Shake, rattle and sing with the **VTech® My 1st Lion Rattle**. Press the light up button or shake the lion to hear songs, phrases and music. You can also have fun and hear fun sounds by twisting the lion's mane.

TWISTABLE  
MECHANICAL  
MANE

TWISTABLE TAIL



ON/OFF/SWITCH

LIGHT UP HEART  
BUTTON

TEXTURED SOFT  
LEAF TEETHER

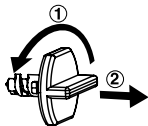
# INCLUDED IN THIS PACKAGE

- One parent's guide
- One My 1st Lion Rattle

**WARNING:** All packing materials, such as tape, plastic sheets, packaging locks, removable tags, cable ties and packaging screws are not part of this toy, and should be discarded for your child's safety.

**NOTE:** Please keep this parent's guide as it contains important information.

Unlock the packaging locks:

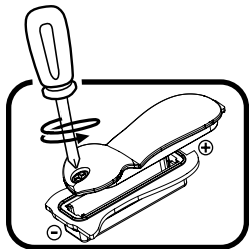


- ① Turn the packaging lock anticlockwise several times.
- ② Pull out and discard the packaging lock.

## GETTING STARTED

### BATTERY INSTALLATION

1. Make sure the unit is turned **OFF**.
2. Locate the battery cover on the electronic panel. Use screwdriver to loosen the screw.
3. Install 1 new AAA (LR03/AM-4) battery following the diagram inside the battery box. (The use of a new alkaline battery is recommended for maximum Performance).
4. Replace the battery cover and tighten the screw to secure.



## BATTERY NOTICE

- Use new alkaline batteries or fully charged NI-MH (Nickel Metal-hydride) rechargeable batteries for best performance.
- Use only batteries of the same or equivalent type as recommended.
- Do not mix different types of batteries: alkaline, standard (carbon-zinc) or rechargeable, or new and used batteries.
- Do not use damaged batteries.
- Insert batteries with the correct polarity.
- Do not short-circuit the battery terminals.
- Remove exhausted batteries from the toy.
- Remove batteries during long periods of non-use.
- Do not dispose of batteries in fire.
- Do not charge non-rechargeable batteries.
- Remove rechargeable batteries from the toy before charging (if removable).
- Rechargeable batteries are only to be charged under adult supervision.

## Disposal of batteries and product



The crossed-out wheeled bin symbols on products and batteries, or on their respective packaging, indicates they must not be disposed of in domestic waste as they contain substances that can be damaging to the environment and human health.



The chemical symbols Hg, Cd or Pb, where marked, indicate that the battery contains more than the specified value of mercury (Hg), cadmium (Cd) or lead (Pb) set out in Battery Directive (2006/66/EC).

The solid bar indicates that the product was placed on the market after 13th August, 2005.

Help protect the environment by disposing of your product or batteries responsibly.

For more information, please visit:

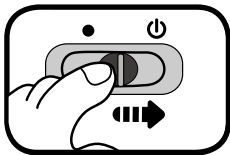
[www.recycle-more.co.uk](http://www.recycle-more.co.uk)

[www.recyclenow.com](http://www.recyclenow.com)

# PRODUCT FEATURES

## 1. ON/OFF/SWITCH

To turn the lion **ON**, slide the **ON/OFF/SWITCH** to the **ON (⏻)** position. To turn the lion **OFF**, slide the **ON/OFF/SWITCH** to the **OFF (●)** position.



## 2. AUTOMATIC SHUT OFF

To preserve battery life, the **VTech® My 1st Lion Rattle** will automatically shut off after approximately 25 seconds without input. The lion can be turned on again by pressing any button. Shaking the lion will not turn it back on.

**NOTE:** If the unit powers down while playing, we suggest changing the batteries.

# ACTIVITIES

- Slide the **ON/OFF/SWITCH** to the on (⏻) position to turn the lion on. You will hear a song and a welcoming phrase. The light will flash with the sounds.



- Press the **LIGHT UP BUTTON** to hear playful songs, phrases and melodies. When a melody is playing, shake the lion to hear a fun sound play over the melody. The light will flash with the sounds.



3. Twist the lion's mechanical mane to trigger fun sounds. The light will flash with the sounds.



4. Twist the lion's mechanical tail to promote motor skill development.



5. Shake the lion to activate the motion sensor. You will hear a variety of playful sounds. The light will flash with the sounds.

## MELODY LIST

1. Aiken Drum
2. The Daring Young Man on the Flying Trapeze
3. Frog Went A-Courting
4. Farmer in the Dell
5. One Man Went to Mow a Meadow
6. Yankee Doodle
7. The Alphabet Song
8. The Glow-Worm
9. Ta-ra-ra Boom-de-ay
10. The Muffin Man
11. Pat-A-Cake
12. Waltzing Matilda
13. Dill Pickles - Charles L. Johnson
14. Jack Be Nimble
15. Blow the Man Down

## **SING-ALONG SONG LYRICS**

### **SONG 1**

Shake, shake, shake,  
Hear what sounds I make.  
Twist, twist, twist.  
I shake my head and say hello.

### **SONG 2**

I'm a lion, a cute and friendly lion,  
My mane makes me feel so big and strong.

### **SONG 3**

Hello my friend, you know I love you.  
When we're together I roar and I purr!

## **CARE & MAINTENANCE**

1. Keep the unit clean by wiping it with a slightly damp cloth.
2. Keep the unit out of direct sunlight and away from any direct heat source.
3. Remove the batteries when the unit will not be in use for an extended period of time.
4. Do not drop the unit on hard surfaces and do not expose the unit to moisture or water.



# TROUBLESHOOTING

If for some reason the program/activity stops working or malfunctions, please follow these steps:

1. Please turn the unit OFF.
2. Interrupt the power supply by removing the batteries.
3. Let the unit stand for a few minutes, then replace the batteries.
4. Turn the unit ON. The unit should now be ready to play with again.
5. If the product still does not work, install a brand new set of batteries.

If the problem persists, please call our Consumer Services Department on 01235 546810 (from UK) or +44 1235 546810 (outside UK) and a service representative will be happy to help you.

## **IMPORTANT NOTE:**

Creating and developing **VTech®** products is accompanied by a responsibility that we take very seriously. We make every effort to ensure the accuracy of the information, which forms the value of our products. However, errors sometimes can occur. It is important for you to know that we stand behind our products and encourage you to call our Consumer Services Department on 01235 546810 (from UK) or +44 1235 546810 (outside UK), with any problems and/or suggestions that you might have. A service representative will be happy to help you.

**CLASS 1  
LED PRODUCT**



# PRODUCT REGISTRATION

Visit [www.vtech.co.uk/clubvtech/login](http://www.vtech.co.uk/clubvtech/login)  
to register your VTech product

By joining the VTech Club you can also enter competitions, find out about news and events, seek expert advice for parents and let your kids play fun learning games and activities.



## PRODUCT WARRANTY

Thank you for choosing this quality product from VTech. We hope it will bring many hours of entertainment, imaginative play and learning.

1. The product detailed above is covered by a one year warranty from the date of purchase, against any defects in materials or workmanship.
2. The product may be returned to the place of purchase. Alternatively the product can be returned to VTech Electronics Europe plc (see address below), with proof of purchase, without proof of purchase no replacement will be provided.
3. VTech Electronics Europe plc will examine the product and if it is found to be defective due to faulty materials or workmanship, will replace the product at their discretion.
4. If the product covered by this warranty is damaged due to misuse, modification or unauthorised repair, or because of faulty batteries, battery discharge or incorrect electrical connections, then this warranty becomes void.
5. This warranty is personal to the original purchaser and is not transferable.
6. Breakages to the LCD screen are not covered by the warranty.
7. Returns to VTech Electronics Europe plc should include a cheque or postal order for £1.50 towards the cost of return postage and packaging.
8. Products returned to VTech Electronics Europe plc, should be addressed as follows and packed carefully to avoid damage in transit (Please do not include batteries or adaptor). Please include details of the fault together with your name and address.
9. To keep an online record of your warranty, please register your product online at [www.vtech.co.uk/warranty](http://www.vtech.co.uk/warranty)

Vtech Electronics EU PLC, c/o XPO Logistics, Warehouse 350, Cat & Fiddle Lane, West Hallam, DE7 6HE

THIS WARRANTY IS OFFERED AS AN EXTRA BENEFIT AND DOES NOT AFFECT CONSUMERS' STATUTORY RIGHTS.

This warranty is valid for the UK and Eire only. For products purchased outside the UK and Eire, please contact your local distributor or place of purchase.



**Visit our website for more  
information about our products,  
downloads, resources and more.**

***[www.vtech.co.uk](http://www.vtech.co.uk)***

